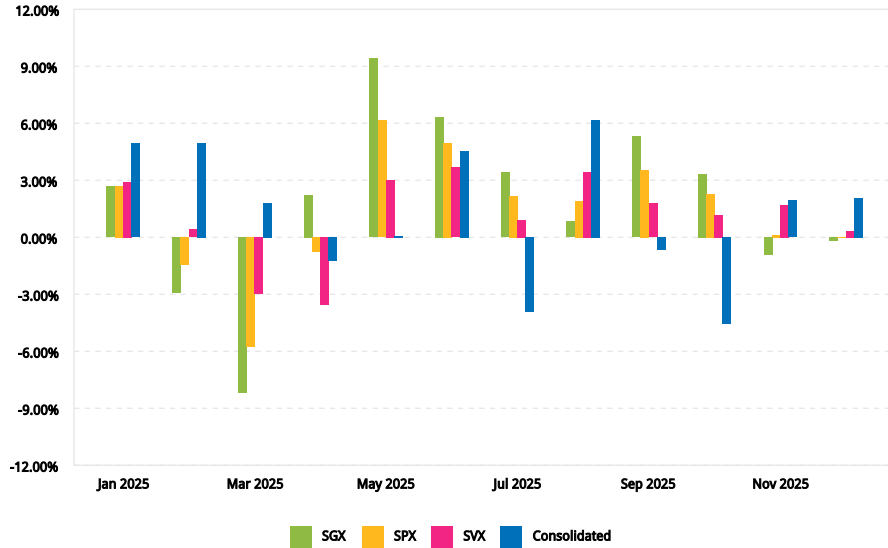
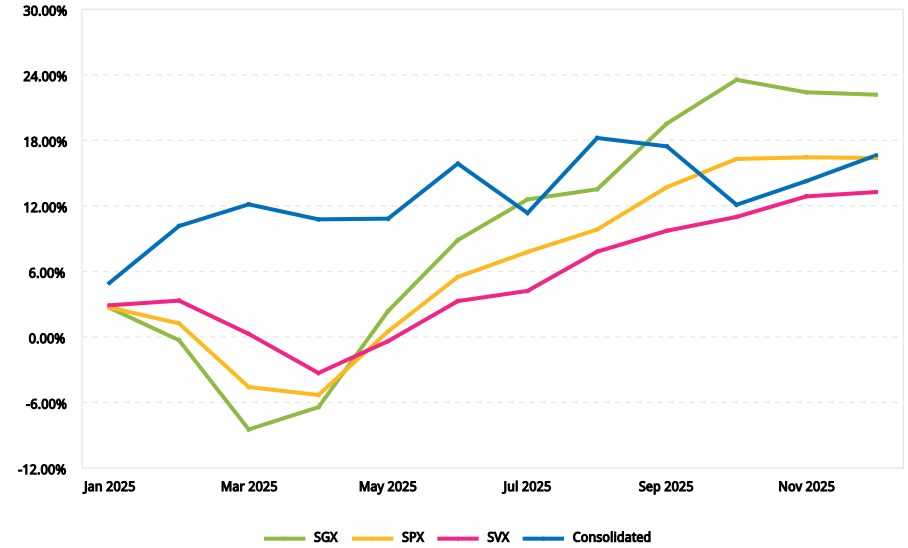


Time Period



Cumulative



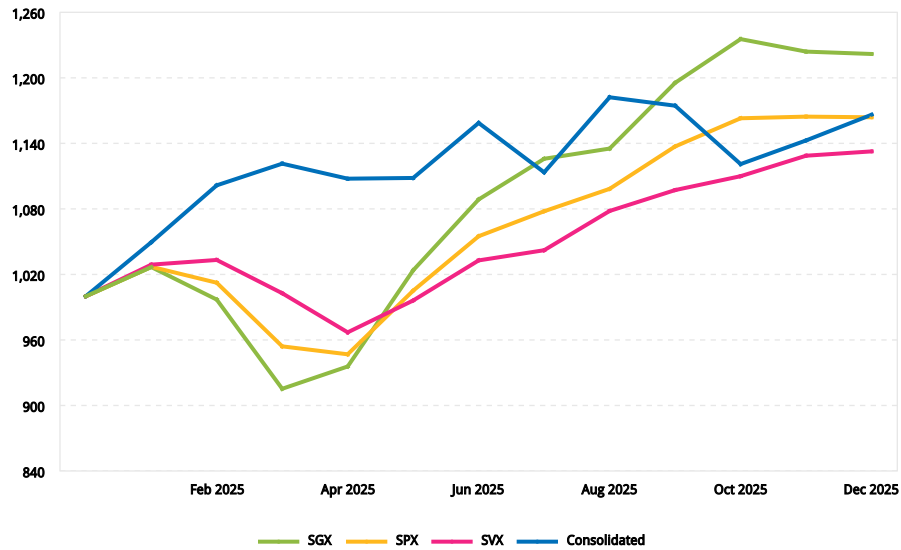
Time Period

Date	SGX (%)	SPX (%)	SVX (%)	Consolidated (%)
Jan 2025	2.68	2.70	2.90	4.94
Feb 2025	-2.90	-1.42	0.42	4.97
Mar 2025	-8.19	-5.75	-2.95	1.80
Apr 2025	2.23	-0.76	-3.57	-1.23
May 2025	9.41	6.15	3.02	0.06
Jun 2025	6.34	4.96	3.68	4.55
Jul 2025	3.42	2.17	0.90	-3.90
Aug 2025	0.83	1.91	3.45	6.17
Sep 2025	5.30	3.53	1.77	-0.65
Oct 2025	3.35	2.27	1.16	-4.55
Nov 2025	-0.93	0.13	1.69	1.93
Dec 2025	-0.18	-0.05	0.35	2.06
Mean	1.78	1.32	1.07	1.35

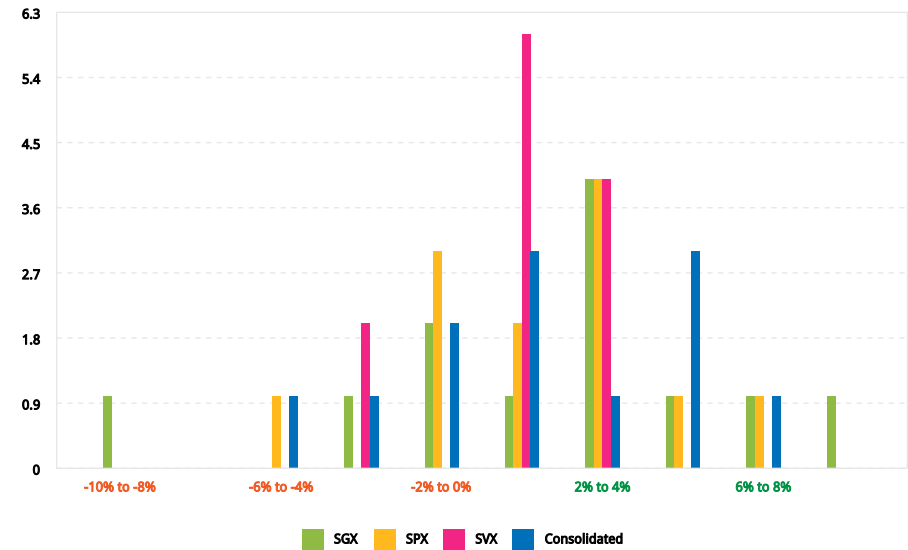
Cumulative

Date	SGX (%)	SPX (%)	SVX (%)	Consolidated (%)
Jan 2025	2.68	2.70	2.90	4.94
Feb 2025	-0.22	0.00	0.00	9.91
Mar 2025	-8.41	-3.00	-3.00	11.71
Apr 2025	-6.18	-3.76	-3.57	10.48
May 2025	2.73	-0.51	-0.51	10.54
Jun 2025	9.07	4.25	3.28	15.09
Jul 2025	12.49	7.02	4.18	11.19
Aug 2025	13.32	8.91	7.81	18.22
Sep 2025	19.66	13.69	9.72	17.45
Oct 2025	23.01	16.02	10.89	12.90
Nov 2025	22.08	16.39	12.87	14.27
Dec 2025	21.90	16.39	13.27	16.62
Jan 2025 to Dec 2025	22.19	16.39	13.27	16.62

Value Added Monthly Index (VAMI)



Distribution of Returns



Risk Measures

	SGX	SPX	SVX	Consolidated
Ending VAMI	1,221.86	1,163.88	1,132.66	1,166.23
Max Drawdown	10.86%	7.81%	6.41%	5.17%
Peak-To-Valley	Jan 2025 - Mar 2025	Jan 2025 - Apr 2025	Feb 2025 - Apr 2025	Aug 2025 - Oct 2025
Recovery	3 Months	2 Months	3 Months	Ongoing
Sharpe Ratio	1.14	1.12	1.14	1.04
Sortino Ratio	1.87	1.82	1.71	1.79
Standard Deviation	4.39%	3.04%	2.22%	3.36%
Downside Deviation	2.66%	1.86%	1.47%	1.95%
Turnover	-	-	-	68.30%
Mean Return	1.78%	1.32%	1.07%	1.35%
Positive Periods	8 (66.67%)	8 (66.67%)	10 (83.33%)	8 (66.67%)
Negative Periods	4 (33.33%)	4 (33.33%)	2 (16.67%)	4 (33.33%)

Risk Measures Relative to Benchmark

Consolidated vs.	SGX	SPX	SVX
Correlation	-0.27	-0.09	0.34
β :	-0.20	-0.10	0.51
α :	0.16	0.13	0.08
Tracking Error	6.19%	4.72%	3.34%
Information Ratio	-0.90	0.05	1.01

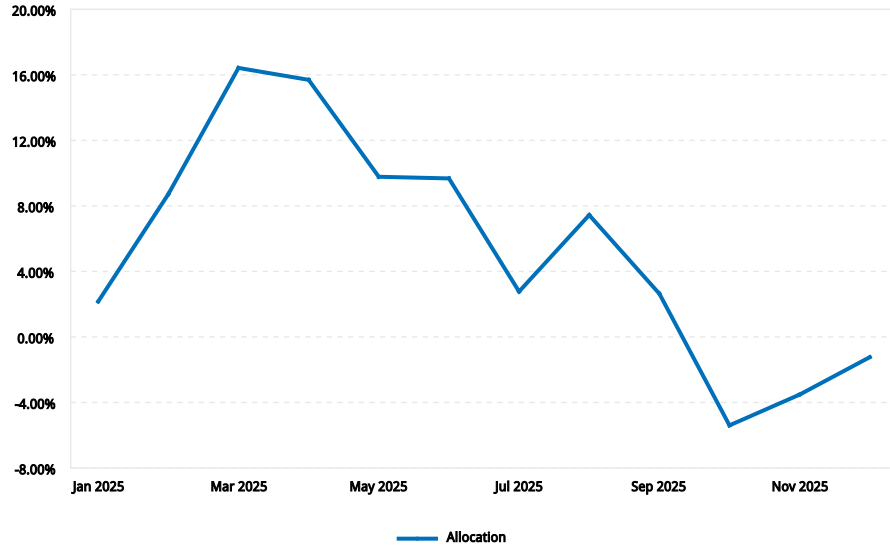
Performance Attribution vs. S&P 500

Analysis Period: January 1, 2025 - December 31, 2025 (TWR)

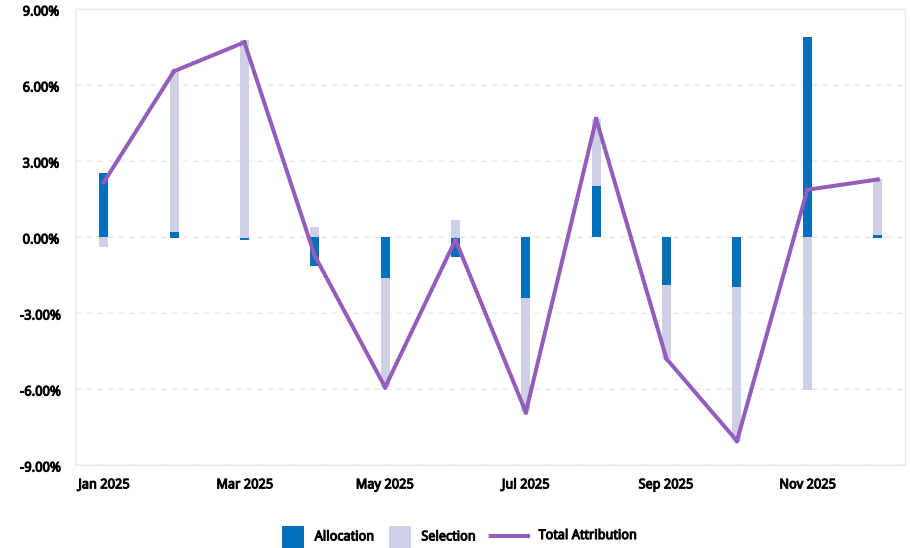
Sector	Beginning Weight (%)			Ending Weight (%)			Average Weight (%)		
	Consolidated	S&P 500	+/-	Consolidated	S&P 500	+/-	Consolidated	S&P 500	+/-
Basic Materials	0.00	1.85	-1.85	0.00	1.77	-1.77	0.00	1.80	-1.80
Broad	-25.57	0.00	-25.57	9.47	0.00	9.47	-14.06	0.00	-14.06
Consumer Cyclical	10.54	12.38	-1.84	11.56	11.32	0.23	12.32	11.56	0.76
Consumer Non-Cyc	13.98	6.81	7.16	7.81	5.97	1.84	10.88	6.75	4.13
Education	0.00	0.00	0.00	0.00	0.00	0.00	0.00	0.00	0.00
Energy	2.63	3.22	-0.59	3.51	2.86	0.65	2.55	3.12	-0.57
Financials	28.97	8.76	20.21	17.23	8.90	8.34	24.89	8.91	15.98
Government	0.00	0.00	0.00	0.00	0.00	0.00	0.00	0.00	0.00
Healthcare	15.73	10.04	5.70	18.38	9.54	8.84	21.01	9.72	11.29
Industrial	0.00	7.57	-7.57	0.00	8.35	-8.35	0.00	7.83	-7.83
Institutions	0.00	0.00	0.00	0.00	0.00	0.00	0.00	0.00	0.00
Real Estate	7.64	2.06	5.58	3.27	1.80	1.47	5.09	1.98	3.11
Technology	10.20	36.47	-26.27	3.85	37.40	-33.56	6.50	36.94	-30.44
Telecomm	14.91	8.34	6.57	13.28	9.54	3.74	16.55	8.74	7.82
Utilities	0.00	2.51	-2.51	0.00	2.55	-2.55	0.00	2.66	-2.66
Cash	20.98	0.00	20.98	11.64	0.00	11.64	14.27	0.00	14.27
Fund Cash	0.00	0.00	0.00	0.00	0.00	0.00	0.00	0.00	0.00
Unclassified	0.00	0.00	0.00	0.00	0.00	0.00	0.00	0.00	0.00

Sector	Period Return (%)			Contribution To Return (%)			Attribution Effect (%)		
	Consolidated	S&P 500	+/-	Consolidated	S&P 500	+/-	Allocation	Selection	Total
Basic Materials	0.00	13.69	-13.69	0.00	0.24	-0.24	-0.24	0.00	-0.24
Broad	19.47	0.00	19.47	-2.13	0.00	-2.13	0.00	-5.47	-5.47
Consumer Cyclical	-0.15	7.25	-7.41	0.07	0.95	-0.88	0.43	0.92	1.35
Consumer Non-Cyc	64.05	4.09	59.97	6.08	0.32	5.77	0.31	4.04	4.35
Education	0.00	0.00	0.00	0.00	0.00	0.00	0.00	0.00	0.00
Energy	29.77	6.93	22.84	0.58	0.22	0.36	-0.12	0.02	-0.10
Financials	27.86	20.64	7.21	6.75	1.82	4.93	2.24	1.46	3.70
Government	0.00	0.00	0.00	0.00	0.00	0.00	0.00	0.00	0.00
Healthcare	46.95	12.68	34.28	8.39	1.05	7.34	0.71	4.59	5.31
Industrial	0.00	29.97	-29.97	0.00	2.18	-2.18	-2.18	0.00	-2.18
Institutions	0.00	0.00	0.00	0.00	0.00	0.00	0.00	0.00	0.00
Real Estate	-8.01	5.18	-13.19	-0.30	0.11	-0.41	0.16	0.02	0.18
Technology	-4.97	20.19	-25.16	-0.03	7.61	-7.64	2.87	0.23	3.10
Telecomm	-16.51	33.87	-50.38	-2.86	2.41	-5.27	-1.36	1.07	-0.29
Utilities	0.00	21.58	-21.58	0.00	0.55	-0.55	-0.55	0.00	-0.55
Cash	-2.28	0.00	-2.28	-0.27	0.00	-0.27	0.00	-0.02	-0.02
Fund Cash	0.00	0.00	0.00	0.00	0.00	0.00	0.00	0.00	0.00
Unclassified	0.00	0.00	0.00	0.00	0.00	0.00	0.00	0.00	0.00
Total	-	-	-	16.62	17.86	-1.23	2.90	-4.13	-1.23

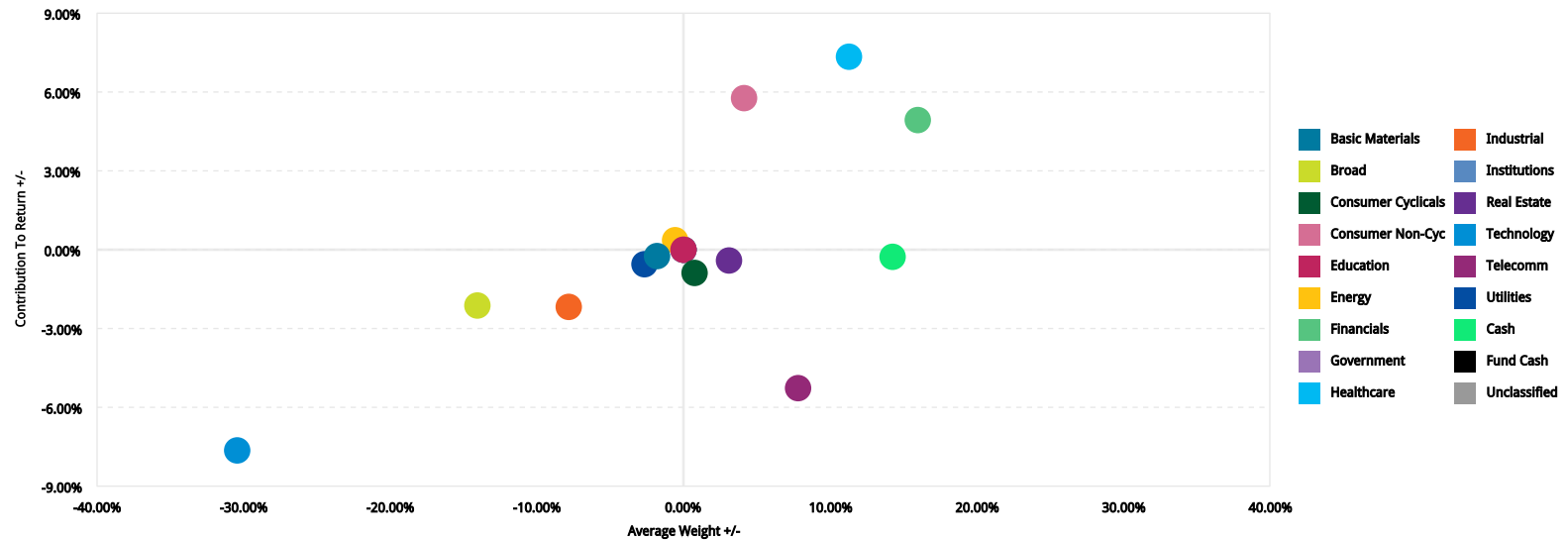
Cumulative Attribution Effect



Attribution Effect



Weighting Effects



General Notes

1. The Net Asset Value (NAV) consists of all positions by financial instrument (stock, securities options, warrants, bonds, cash, etc.). All non-base currency amounts are converted to the base currency at the close of period rate.
2. The gain or loss from future contracts settle into cash each night. The notional value is used when computing the contribution to return.
3. Dividend accruals, interest accruals, and insured deposits are included in cash amounts throughout the report.
4. Price valuations are obtained from outside parties. Interactive Brokers shall have no responsibility for the accuracy or timeliness of any such price valuation.
5. Data from Thomson Reuters Business Classifications and Lipper Global is used to derive our sector classifications. Funds with assorted sector allocations are classified as Broad.
6. Amounts are formatted to two decimal places. If amounts are greater than two decimal places, Interactive Brokers uses "half-even" rounding. This means that Interactive Brokers rounds such amounts up to the nearest even number.
7. For accounts opened and funded before 2009, reports with a time period of Since Inception will only include data going back to January 1, 2009. This includes some default reports and both Historical Performance reports.
8. If you have elected to trade cryptocurrency/digital asset products at Crypto Provider through the Interactive Brokers platform, for your convenience your positions in your linked account at Crypto Provider are reflected in PortfolioAnalyst in connection with your Interactive Brokers account.

Section Specific Notes

1. Benchmark Comparison: The benchmarks included in this report are SGX (S&P 500 - Citigroup Growth Index in USD), SPX (S&P 500 Stock Index in USD), SVX (S&P 500 - Citigroup Value Index in USD), and S&P 500 (S&P 500 in USD).
2. Performance Attribution vs. S&P 500: The Performance Attribution report uses the Frongello method for mathematical smoothing, developed by Andrew Scott Bay Frongello. The Performance Attribution report is only available from 2019 on. Historical dividend data in the Performance Attribution report may be modeled from sector compositions that are subject to change.
3. Risk Measures: Historical US 3 Month Treasury Bill rates are used as the risk free rates when calculating Alpha, the Sharpe ratio, the Sortino ratio, and the downside deviation.

Disclosure

This portfolio report was generated using Interactive Brokers' PortfolioAnalyst tool, which allows Interactive Brokers clients to generate analyses of their accounts using market data provided by third parties along with trade and account data contained in Interactive Brokers' systems. This report is for information purposes only and is provided AS IS. Interactive Brokers makes no warranty of any kind, express or implied, as to this report and its contents. The data provided for use in the PortfolioAnalyst tool is believed to be accurate, but completeness and accuracy of the information is not guaranteed, and Interactive Brokers has no liability with respect thereto. The data regarding accounts held outside of Interactive Brokers is obtained either directly from your input or from the financial institutions holding those accounts through a third-party service provider and Interactive Brokers has NOT reviewed its accuracy.

The material in this report is intended only as a reference and should not be relied upon for the maintenance of your books and records for tax, accounting, financial, or regulatory reporting or for any other purposes. This report is not an offer or a solicitation of an offer to buy or sell any security. This material does not, and is not intended to, take into account the particular financial conditions, investment objectives, or requirements of individual customers. Before acting on any material within this report, you should consider whether it is suitable for your particular circumstances and as necessary, seek professional advice.